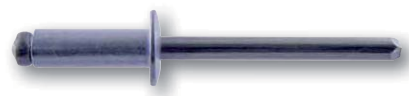


# Open End Rivets

Non-structural blind breakstem rivet designed for a wide range of applications. Available in a variety of materials and combinations.



## Key features and benefits

- Cost effective standard rivet
- Installed quickly and easily
- Design of the stem head ensures positive retention after installation

## Specifications

Sizes:

3/32" – 1/4"

(2.4 mm – 6.4 mm)

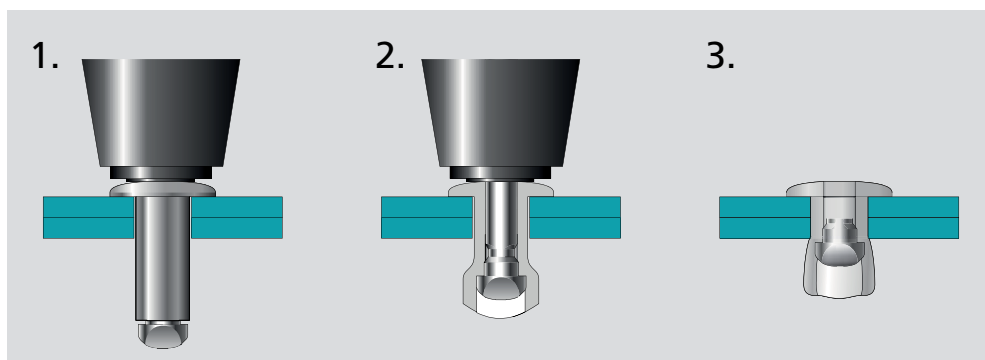
Materials:

Aluminum, Steel,  
Stainless Steel, Copper,  
Nickel Copper Alloy

Head Styles:

Dome, Large Flange,  
Countersunk

## Typical placing sequence



Please visit our website for fastener placing animations and technical data.

## Assembly applications

- White goods
- Automotive
- Building & construction
- Furniture
- Lighting
- Hearth, grill
- Patio furniture
- Renewable energies

Automotive



White goods



Snowmobile trailer



Lighting equipment



Conference room furnishings



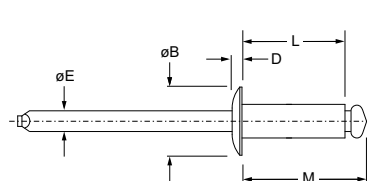
Gutter



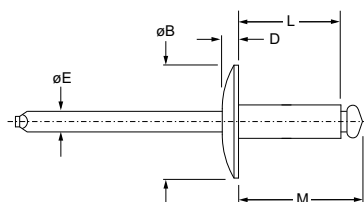


English	Français	Deutsch	Italiano	Español
Body: Stainless steel* Natural	Corps: Inox* Brut	Hülse: Edelstahl* Unbehandelt	Corpo: Acciaio inox* Nessuna finitura	Cuerpo: Acero inoxidable* Natural
Stem: Steel Protective coating	Tige: Acier Revêtement de protection	Dorn: Stahl Schutzüberzug	Gambo: Acciaio Rivestimento protettivo	Vástago: Acero Revestimiento preservador

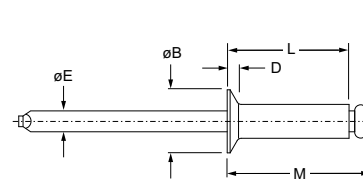
\*: 300 Series



**SSD ■ BS**  
Dome head  
Tête bombée / Flachrundkopf /  
Testa tonda / Cabeza alomada



**SSD ■ BS LF**  
Large flange  
Tête large / Flachrundkopf, extragroß /  
Testa larga / Cabeza ancha



**SSK ■ BS**  
Countersunk  
Tête fraisée / Senkkopf /  
Testa svasata / Cabeza avellanada

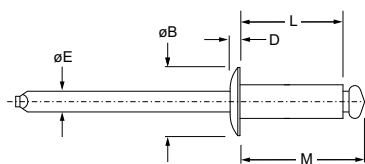
Ø nom.	min. max.		min. max.		L ref.	M ref.	ØE ref.	SSD ■ BS			SSD ■ BS LF			SSK ■ BS		
								ØB max.	D max.	Part No. ■	ØB max.	D max.	Part No. ■	ØB max.	D max.	Part No. ■
1/8" (3.2)	.032 (0.8)	.062 (1.6)			.188 (4.8)	.308 (7.8)				41						
	.063 (1.6)	.125 (3.2)			.250 <sup>1)</sup> (6.4) <sup>1)</sup>	.370 (9.4)				42			42			42
	.126 (3.2)	.187 (4.8)			.313 (8.0)	.433 (11.0)				43			43			43
	.188 (4.8)	.250 (6.4)	.129 (3.28)	.133 (3.38)	.375 (9.5)	.495 (12.6)	.076 (1.9)	.262 (6.7)	.040 (1.1)	44	.390 (10.0)	.046 (1.2)	44	.233 (6.0)	.051 (1.3)	
	.251 (6.4)	.312 (7.9)			.438 (11.1)	.558 (14.2)				45						
	.313 (7.9)	.375 (9.5)			.500 (12.7)	.620 (15.7)				46						
	.376 (9.5)	.500 (12.7)			.625 (15.9)	.745 (18.9)				48						
5/32" (4.0)	.063 (1.6)	.125 (3.2)			.275 (7.0)	.415 (10.5)				52						
	.188 (4.8)	.250 (6.4)	.160 (4.06)	.164 (4.17)	.400 (10.2)	.540 (13.7)	.095 (2.4)	.328 (8.4)	.047 (1.2)	54						
	.251 (6.4)	.375 (9.5)			.525 (13.3)	.665 (16.9)				56						

dimensions in inches and (mm) / en pouces et (millimètre) / alle Maße in Zoll und (mm) / in pollici e (millimetri) / en pulgadas y (milímetros)

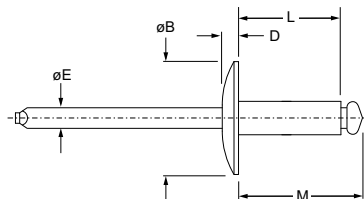
1) SSK 42 BS: .275 (7.0)

# Open End SSD BS / SSK BS Series

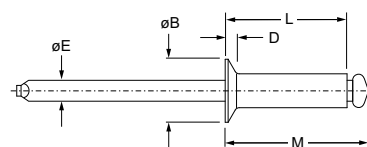
## Stainless Steel / Steel



**SSD ■ BS**  
Dome head  
Tête bombée / Flachrundkopf /  
Testa tonda / Cabeza alomada



**SSD ■ BS LF**  
Large flange  
Tête large / Flachrundkopf, extragroß /  
Testa larga / Cabeza ancha



**SSK ■ BS**  
Countersunk  
Tête fraisée / Senkkopf /  
Testa svasata / Cabeza avellanada

Ø nom.	min. max.		min. max.	L ref.	M ref.	ØE ref.	SSD ■ BS			SSD ■ BS LF			SSK ■ BS		
	min.	max.					ØB max.	D max.	Part No.	ØB max.	D max.	Part No.	ØB max.	D max.	Part No.
3/16" (4.8)	.063 (1.6)	.125 (3.2)	.192 (4.88)	.196 (4.98)	.300 (7.6)	.460 (11.7)	.114 (2.9)	.393 (10.0)	.055 (1.4)	.650 (16.6)	.083 (2.2)	.363 (9.3)	.071 (1.8)		64
	.126 (3.2)	.250 (6.4)			.425 (10.8)										
	.251 (6.4)	.375 (9.5)			.550 (14.0)										
	.376 (9.5)	.500 (12.7)			.675 (17.2)										
	.501 (12.7)	.625 (15.9)			.800 (20.3)										
	.876 (22.3)	1.000 (25.4)			1.175 (29.8)										

dimensions in inches and (mm) / en pouces et (millimètre) / alle Maße in Zoll und (mm) / in pollici e (millimetri) / en pulgadas y (milímetros)

Ø		
nom.	lbf (kN) <sup>2)</sup>	lbf (kN) <sup>2)</sup>
1/8" (3.2)	550 (2.45)	700 (3.12)
5/32" (4.0)	900 (4.01)	1130 (5.03)
3/16" (4.8)	1000 <sup>3)</sup> (4.45) <sup>3)</sup>	1375 <sup>4)</sup> (6.12) <sup>4)</sup>

2) typical values / valeurs moyennes / typische Werte /  
Valori tipici / valores típicos

3) SSD 616 BS LF: 590 (2.62)

4) SSD 616 BS LF: 815 (3.63)